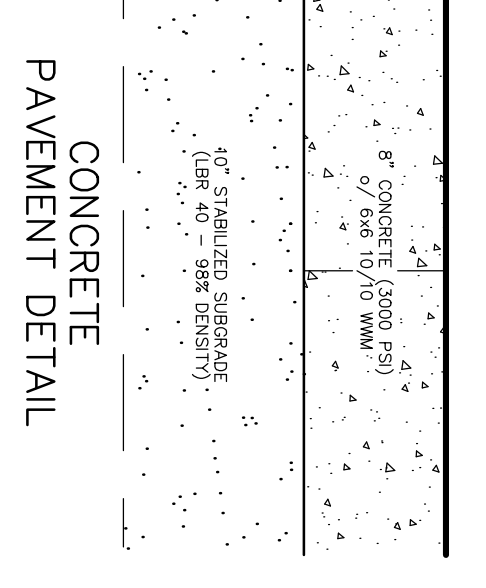
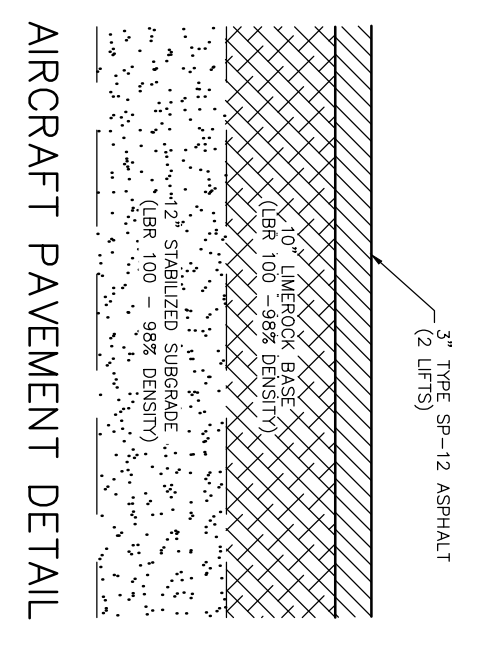
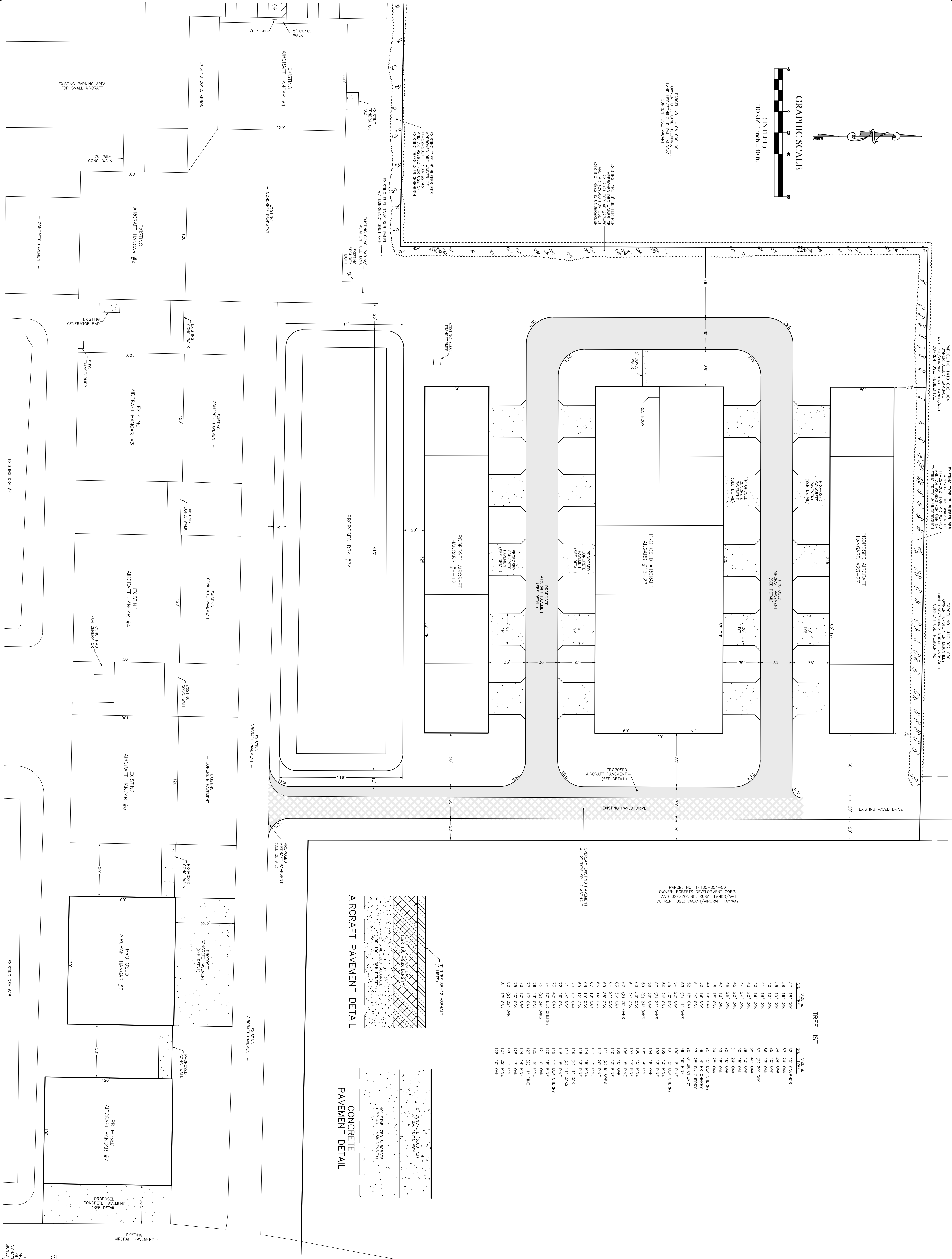


PARCEL NO. 14105-000-00
OWNER: BALL AND HOLDINGS, LLC
LAND USE/ZONING: RURAL LANDS/A-1
CURRENT USE: VACANT

PARCEL NO. 14105-001-00
OWNER: HARBORER-KOENIGLY
LAND USE/ZONING: RURAL LANDS/A-1
CURRENT USE: RESIDENTIAL

PARCEL NO. 14105-001-00
OWNER: HARBORER-KOENIGLY DEVELOPMENT CORP.
LAND USE/ZONING: RURAL LANDS/A-1
CURRENT USE: VACANT/AIRCRAFT TAXIWAY



TREE LIST

NO.	SIZE & SPECIES	NO.	SIZE & SPECIES
37	18" OAK	62	15" CAMPHOR
38	18" OAK	63	24" OAK
39	15" OAK	64	24" OAK
40	12" OAK	65	15" OAK
41	18" OAK	66	15" OAK
42	18" OAK	67	(2) 20" OAK
43	18" OAK	68	40" OAK
44	24" OAK	69	13" OAK
45	20" OAK	70	15" OAK
46	28" OAK	71	18" OAK
47	18" OAK	72	18" OAK
48	18" OAK	73	42" OAK
49	18" OAK	74	15" OAK
50	18" OAK	75	15" OAK
51	24" OAK	76	27" OAK
52	18" OAK	77	13" OAK
53	(2) 14" OAKS	78	12" OAK
54	20" OAK	79	20" OAK
55	24" OAK	80	20" OAK
56	24" OAK	81	17" OAK
57	(2) 22" OAKS		
58	28" OAK		
59	(2) 24" OAKS		
60	18" OAK		
61	24" OAK		
62	(2) 20" OAKS		
63	36" OAK		
64	21" OAK		
65	14" OAK		
66	14" OAK		
67	18" OAK		
68	12" OAK		
69	12" OAK		
70	12" OAK		
71	14" OAK		
72	28" OAK		
73	42" OAK		
74	15" OAK		
75	15" OAK		
76	27" OAK		
77	13" OAK		
78	12" OAK		
79	20" OAK		
80	20" OAK		
81	17" OAK		
82	15" CAMPHOR		
83	24" OAK		
84	24" OAK		
85	15" OAK		
86	(2) 20" OAK		
87	(2) 20" OAK		
88	40" OAK		
89	13" OAK		
90	15" OAK		
91	18" OAK		
92	18" OAK		
93	18" OAK		
94	25" OAK		
95	24" BK CHERRY		
96	24" BK CHERRY		
97	28" BK CHERRY		
98	8" BK CHERRY		
99	18" PINE		
100	15" PINE		
101	12" BLK CHERRY		
102	15" PINE		
103	15" PINE		
104	18" OAK		
105	15" PINE		
106	15" PINE		
107	17" PINE		
108	18" PINE		
109	15" PINE		
110	15" PINE		
111	(2) 8" OAKS		
112	20" PINE		
113	17" PINE		
114	15" PINE		
115	15" PINE		
116	14" OAK		
117	(2) 11" OAKS		
118	18" PINE		
119	17" BLK CHERRY		
120	15" PINE		
121	15" PINE		
122	12" PINE		
123	(2) 11" PINE		
124	14" PINE		
125	12" OAK		
126	15" PINE		
127	22" PINE		
128	10" OAK		

William A. Menadier, M.E.
Fl. Reg. No. 74881
Menadier@menadier.com
8-6-2024

A MAJOR SITE PLAN
FOR
JUMBOAIR PHASE 2 HANGAR COMPLEX
MARION COUNTY, FLORIDA
Site Plan

MENADIER ENGINEERING
PO Box 636 | Alachua, Florida 32616 | Ph. (386) 347-5133 | www.menadier.com

ROGERS ENGINEERING, LLC
Civil Engineering & Land Surveying
1105 S.E. 3rd Avenue • Ocala, Florida 34471 • Ph. (352) 622-9214 • Lic. Bus. #4074

DATE	REVISIONS

DATE: 8-6-2024
SHEET: 004