

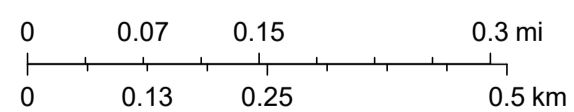
# Dizney Double Diamond Aerial



1/5/2025, 3:07:04 PM

- Marion County
- Parcels
- Streets
- Red: Band\_1
- Green: Band\_2
- Blue: Band\_3

1:9,028

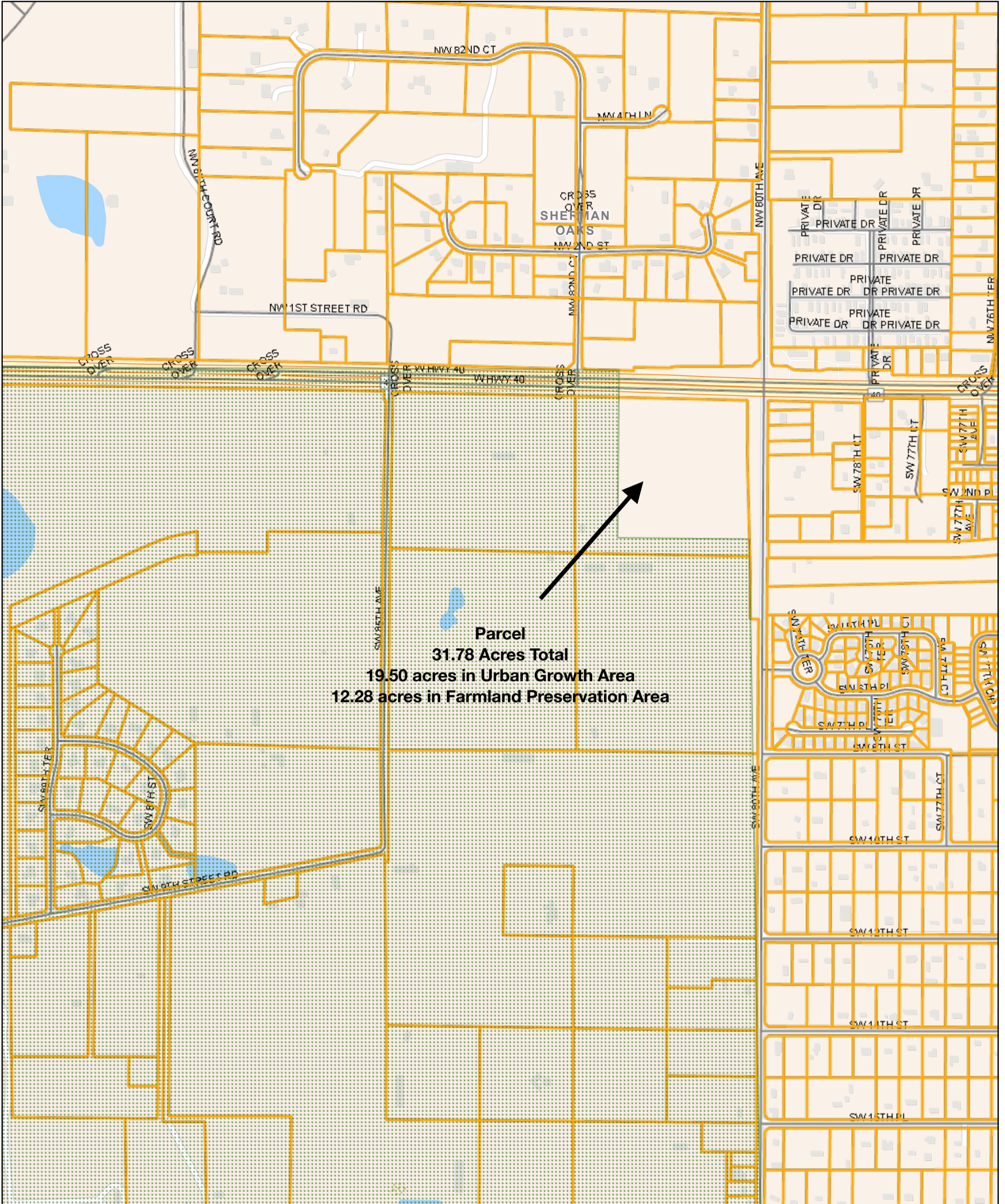


Marion County Property Appraiser, Esri Community Maps Contributors, Marion County Property Appraiser, FDEP, © OpenStreetMap, Microsoft, Esri, TomTom, Garmin, SafeGraph, GeoTechnologies, Inc, METI/NASA, USGS, EPA, NPS, US Census Bureau, USDA, USFWS, Marion

Marion County Board of County Commissioners

This map is provided "as is" without any warranty or representation of accuracy, timeliness, completeness, merchantability, or fitness. The user is responsible for verifying any information and assumes all risk for reliance

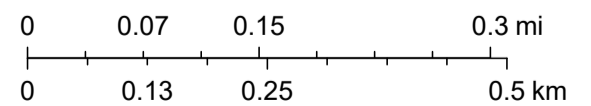
# Dizney Double Diamond FPA



1/5/2025, 3:08:30 PM

- Farmland Preservation Area
- Marion County
- Parcels
- Streets

1:9,028

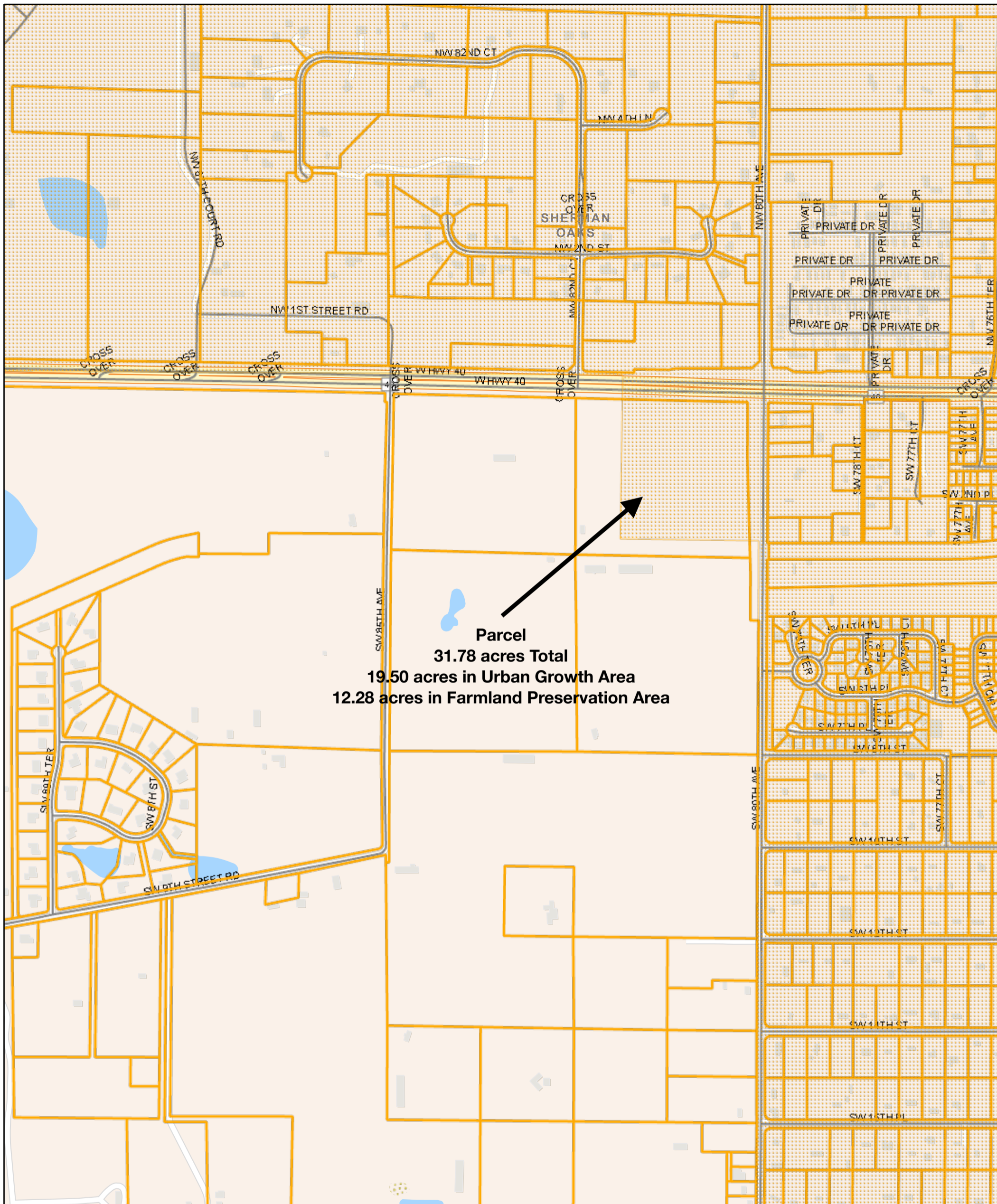


Marion County Property Appraiser, Esri Community Maps Contributors, Marion County Property Appraiser, FDEP, © OpenStreetMap, Microsoft, Esri, TomTom, Garmin, SafeGraph, GeoTechnologies, Inc, METI/NASA, USGS, EPA, NPS, US Census Bureau, USDA, USFWS, Marion

Marion County Board of County Commissioners





This map is provided "as is" without any warranty or representation of accuracy, timeliness, completeness, merchantability, or fitness. The user is responsible for verifying any information and assumes all risk for reliance

# Dizney Double Diamond UGB

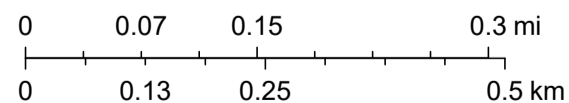


Parcel  
 31.78 acres Total  
 19.50 acres in Urban Growth Area  
 12.28 acres in Farmland Preservation Area

1/5/2025, 3:09:24 PM

-  Urban Growth Boundary
-  Marion County
-  Parcels
-  Streets

1:9,028

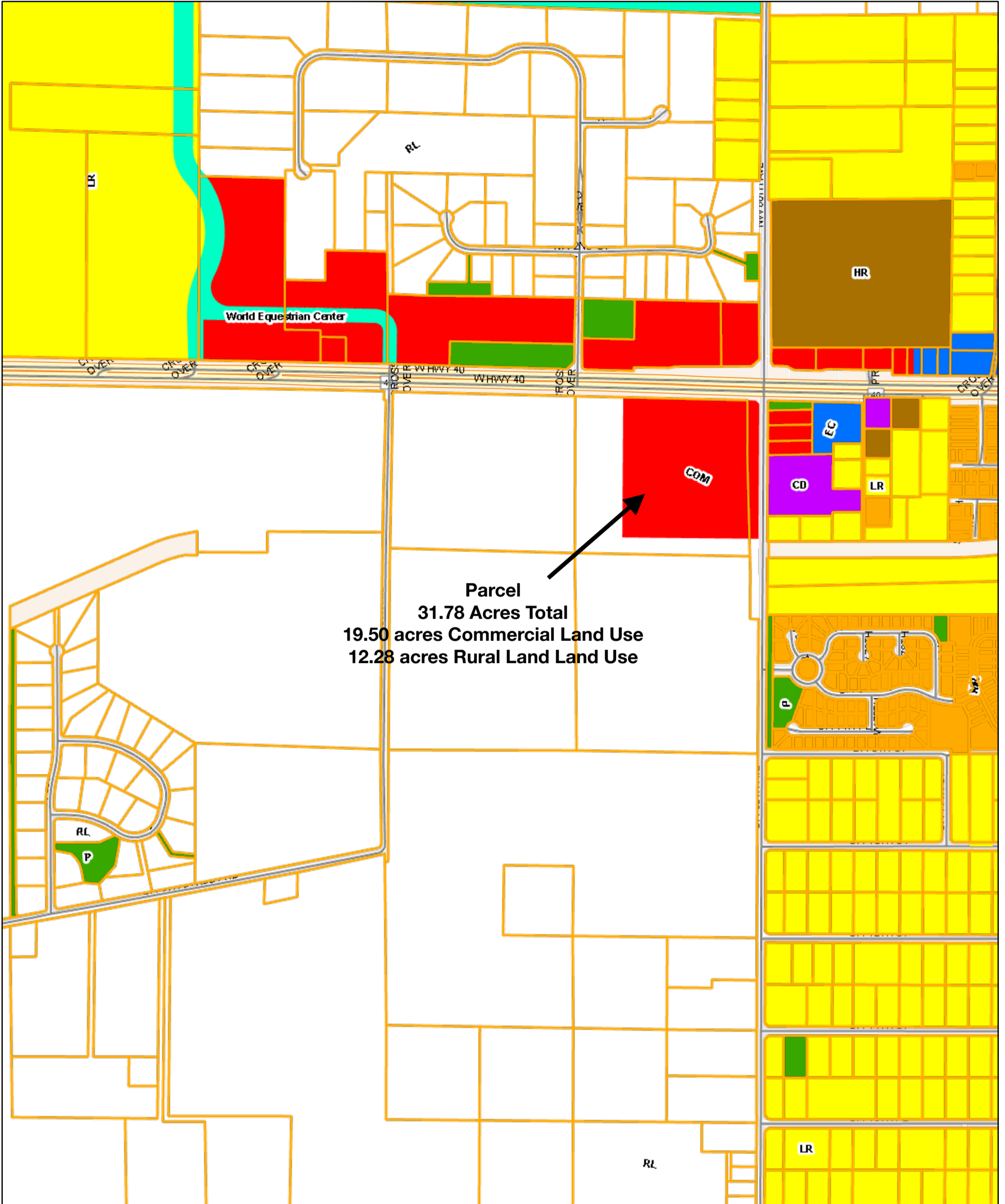


Marion County Property Appraiser, Esri Community Maps Contributors, Marion County Property Appraiser, FDEP, © OpenStreetMap, Microsoft, Esri, TomTom, Garmin, SafeGraph, GeoTechnologies, Inc, METI/NASA, USGS, EPA, NPS, US Census Bureau, USDA, USFWS, Marion

Marion County Board of County Commissioners

This map is provided "as is" without any warranty or representation of accuracy, timeliness, completeness, merchantability, or fitness. The user is responsible for verifying any information and assumes all risk for reliance

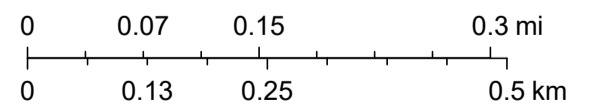
# Dizney Double Diamond FLU



1/5/2025, 3:10:24 PM

- |                 |                                  |  |                                           |
|-----------------|----------------------------------|--|-------------------------------------------|
|                 | Marion County                    |  | Commercial (0 - 8 du/ac; FAR 1.0)         |
|                 | Parcels                          |  | Employment Center (0 - 16 du/ac; FAR 2.0) |
| Future Land Use |                                  |  | Commerce District (N/A; FAR 2.0)          |
|                 | Rural Land (1 du/10 ac)          |  | Public (N/A; FAR 1.0)                     |
|                 | Low Residential (0 - 1 du/ac)    |  | World Equestrian Center                   |
|                 | Medium Residential (1 - 4 du/ac) |  | Streets                                   |
|                 | High Residential (4 - 8 du/ac)   |  |                                           |

1:9,028

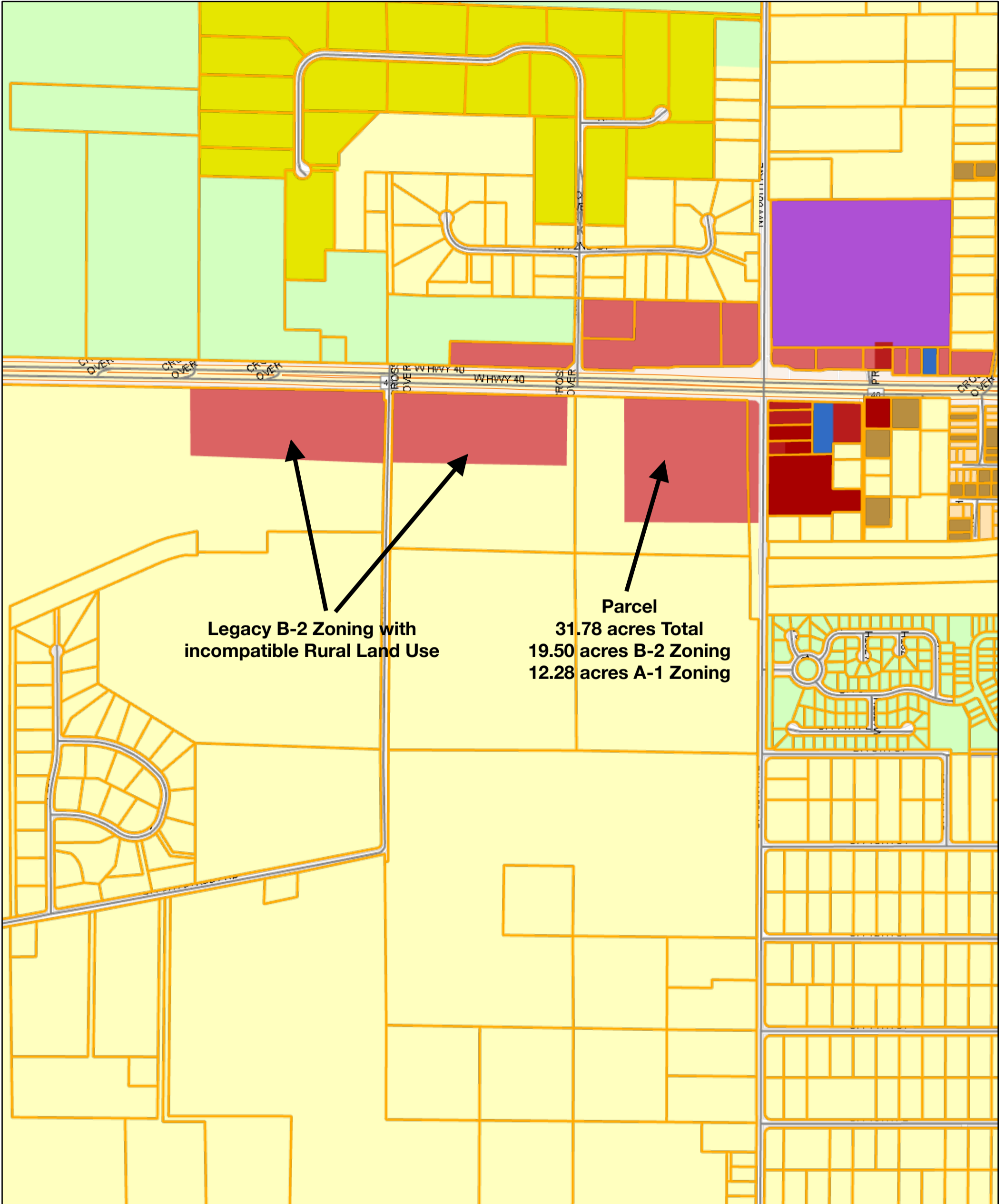


Marion County Property Appraiser, Esri Community Maps Contributors, Marion County Property Appraiser, FDEP, © OpenStreetMap, Microsoft, Esri, TomTom, Garmin, SafeGraph, GeoTechnologies, Inc, METI/NASA, USGS, EPA, NPS, US Census Bureau, USDA, USFWS, Marion

Marion County Board of County Commissioners

This map is provided "as is" without any warranty or representation of accuracy, timeliness, completeness, merchantability, or fitness. The user is responsible for verifying any information and assumes all risk for reliance

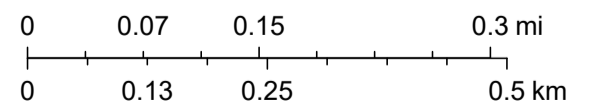
# Dizney Double Diamond ZONING



1/5/2025, 3:11:10 PM

- |                              |               |  |     |  |      |  |         |
|------------------------------|---------------|--|-----|--|------|--|---------|
|                              | Marion County |  | A-3 |  | M-1  |  | R-4     |
|                              | Parcels       |  | B-2 |  | P-MH |  | Streets |
| <b>Zoning Classification</b> |               |  | B-4 |  | PUD  |  |         |
|                              | A-1           |  | B-5 |  | R-1  |  |         |

1:9,028



Marion County Property Appraiser, Esri Community Maps Contributors, Marion County Property Appraiser, FDEP, © OpenStreetMap, Microsoft, Esri, TomTom, Garmin, SafeGraph, GeoTechnologies, Inc, METI/NASA, USGS, EPA, NPS, US Census Bureau, USDA, USFWS, Marion

Marion County Board of County Commissioners

This map is provided "as is" without any warranty or representation of accuracy, timeliness, completeness, merchantability, or fitness. The user is responsible for verifying any information and assumes all risk for reliance